



PropertyLine



## 25 Molyneux Square

Hampton Vale, Peterborough, PE7 8WA

£1,300 Per Month

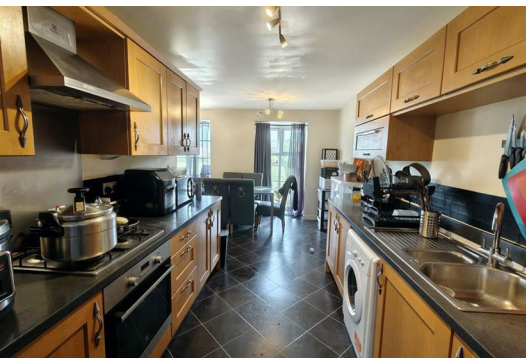


Nestled in the desirable Molyneux Square, Hampton Vale, this charming terraced house offers a perfect blend of modern living and convenience. Built in 2014, the property spans an impressive 1,206 square feet across three well-designed storeys, providing ample space for families or those seeking a comfortable home.

The layout is thoughtfully designed, allowing for a seamless flow between spaces. The heart of the home features a contemporary kitchen that is both functional and stylish, perfect for culinary enthusiasts.

The property boasts four spacious bedrooms, providing plenty of room for family members or guests. The two well-appointed bathrooms ensure that morning routines are a breeze, catering to the needs of a busy household.

One of the standout features of this home is its proximity to local parks and shops, making it an ideal location for those who enjoy outdoor activities and the convenience of nearby amenities. Additionally, the property includes a garage, offering secure parking and extra storage space.



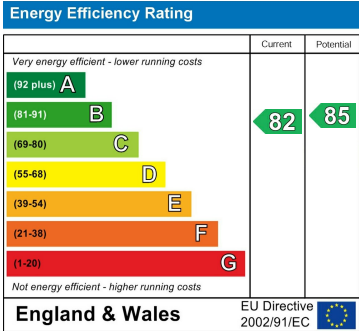
## Area Map



## Floor Plans



## Energy Efficiency Graph



These particulars, whilst believed to be accurate are set out as a general outline only for guidance and do not constitute any part of an offer or contract. Intending purchasers should not rely on them as statements of representation of fact, but must satisfy themselves by inspection or otherwise as to their accuracy. No person in this firm's employment has the authority to make or give any representation or warranty in respect of the property.